



OUTSOURCE TECH INC.

Your full service product design partner.



product design
engineering



Innovative customer solutions, Unsurpassed quality and service

*OTI's focus is on providing practical innovation
in a timely and cost effective manner.*

Today, companies face unprecedented challenges getting new products to market. Skilled personnel are scarce, schedules are compressed, budgets are tight. Computer hardware and software technology, essential to the product development effort, change at a bewildering rate.

At OTI, our professionals understand your work environment and have the energy and know-how to get the job done. Our business is based on providing customer-driven solutions to specific product development requirements.

We're a young, dynamic, multidisciplinary product development company located in Lynnwood, Washington, part of the Northwest's high technology community.

Our team of customer-centered professionals will work with you to design and prototype your product - from first concept until it's ready for production.

And that's not all...

We can provide support with product testing, validation, documentation, and database support.

Top quality is what we're all about. Our professional staff utilizes the high-end solid modeling program, Pro/Engineer and the finite element analysis program, Pro/Mechanica on Windows NT. Our multi-platform network hosts Microsoft Windows '95 PCs running Cadkey and AutoCAD.

OTI works in partnership with tooling and machine shops to create prototypes and production tools directly from CAD databases, thereby reducing product development time.

OTI's versatile employees have handled product development challenges for companies manufacturing a wide range of products, from military, to consumer, to medical.

*Maximize your
product development
budget,
schedule, and resources.*

To discover how the OTI team can perform for

Product design & Engineering Support Services

OTI provides rapid turnaround and outstanding quality in a wide array of product design and engineering support services.

Product Design Services

■ New Product Design

- Design from concept to production
- Laser measurement devices
- Electro-mechanical packaging design
- Industrial design
- Machine and mechanism design
- Medical device design
- Product requirements specifications
- Quality engineering
- PCB/PCA layout
- Welded and fabricated structures
- Prototyping via SLA, SLS, CNC
- Materials selection consulting
- Design optimization for manufacturability

■ Design Process Support

- Design development of new products for compliance with regulatory requirements
- Retrospective and prospective process validation
- Design verification testing
- Hazard analysis
- Quality planning
- 510(k) submission support

■ Analysis

- Finite element analysis and manual stress analysis with Pro/Mechanica (Rasna) and Ansys Finite Element Analysis software
- Trade, productivity, and cost studies for design alternative analysis

■ Test Fixtures

Test fixture design, validation and documentation.

Supplier Services

■ Supplier Selection and Risk Assessment

On-site audits, surveys, failure, and corrective action analysis

Engineering Support Services

■ Engineering Documentation

- Full service engineering drawings in Pro/Engineer, Cadkey, or AutoCAD
- Sustaining engineering documentation
- Translation of existing CAD designs into Pro/Engineer, Cadkey, or AutoCAD databases

■ Technical Publications

- Technical writing, editing, and illustration
- Operating Instructions, Service Manuals, On-line help
- Technical manual preparation, graphic design, and production

you, call 206.745.2466, or toll free, 888.468.4364.



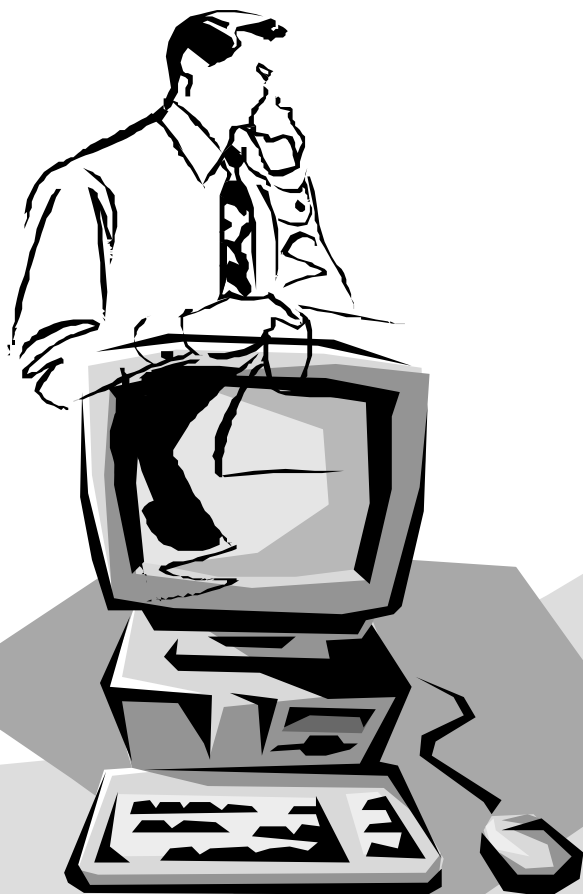
OUTSOURCE TECH INC.

Your full service product design partner.

At OTI, our goal is customer satisfaction.

■ **We are committed to:**

- Making customers our Number One priority
- Meeting or exceeding customers' expectations
- Striving for continuous improvement
- Collaborating with customers to meet common objectives



A partial list of OTI's clients:

Balanced Engines, Inc.

Biofluid, Inc.

Data I/O Corporation

Geometric Research

Korry Electronics Company

Olin Aerospace Company

Physio-Control Corporation

HO Sports, Inc.

Red Dot Corporation

Ride Snowboards, Inc.

Siemens Medical Systems, Inc.

Synrad, Inc.

Tempress, Inc.

Terrell Research

Washington Security Products, Inc.

Watson Furniture Systems, Inc.

Virtual I/O, Inc.



OUTSOURCE TECH INC.

Your full service product design partner.

14926 35th Avenue W, Suite B
Lynnwood, WA 98037-2303-USA

phone: 206.745.4266

toll free: 888.468.4364

fax: 206.745.2715

e-mail: oti@otinc.com